



How to Add a Wi-Fi Camera to a Uniview Non-Wi-Fi NVR?

Title:	How to Add a Wi-Fi Camera to a Uniview Non-Wi-Fi NVR?	Version:	V1.1
Product:	NVR	Date	9/26/2023

How to Add a Wi-Fi Camera to a Uniview Non-Wi-Fi NVR?

Description

Customers may need to add some additional Wi-Fi cameras onto their Non-Wi-Fi NVR.

Note: This method is applicable to most of the scenarios encountered problems, if the method still cannot solve your problem, it is recommended to consult our Tech Support Team.

https://global.uniview.com/Support/Service_Hotline/

Operating Steps

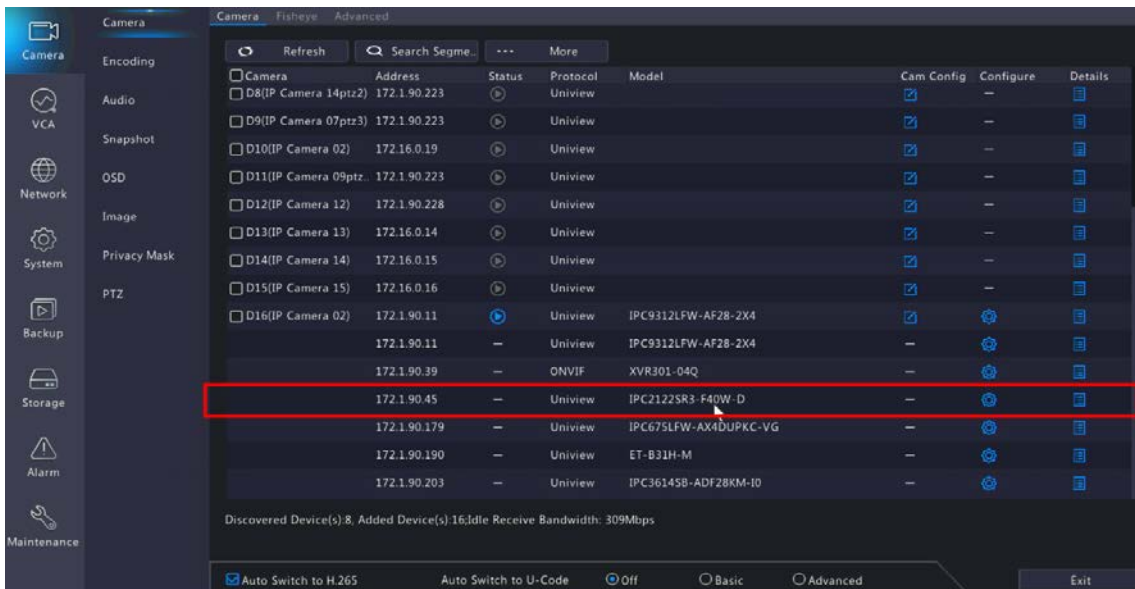
Step 1 Connect the Wi-Fi camera to your router's network.

Note: Generally a Wi-Fi camera needs an app to get it connected to the router's network.

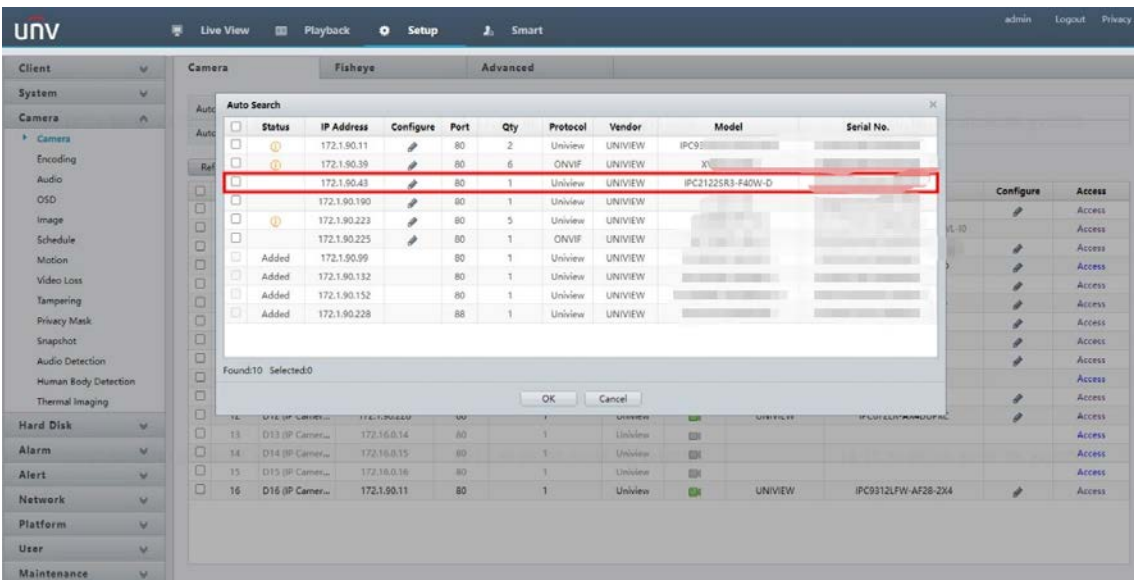
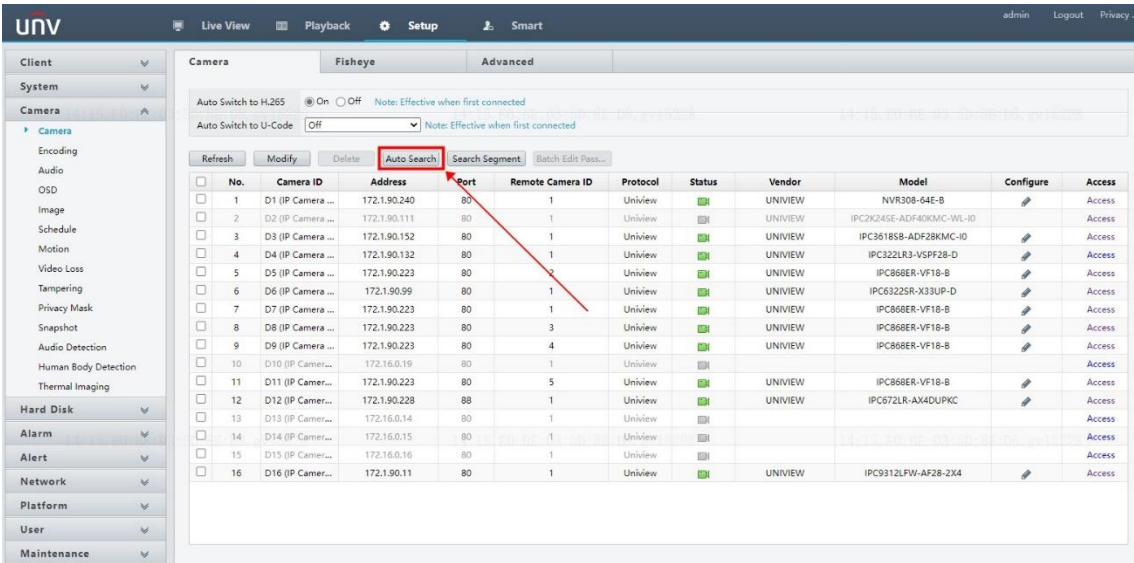
Step 2 Add the Wi-Fi camera to the Uniview NVR.

Once the camera is connected to the router's network, it will be detected by the NVR on the bottom of the camera list on the GUI or in the camera list when you do auto search on the NVR's web interface.

You will be able to search and find the camera and add it through IP address then.



Title:	How to Add a Wi-Fi Camera to a Uniview Non-Wi-Fi NVR?	Version:	V1.1
Product:	NVR	Date	9/26/2023



Note: Cameras from different vendors may have different operations, it is strongly recommended to contact the vendor's tech support team to get the Wi-Fi camera connected to the router's network/Wi-Fi.

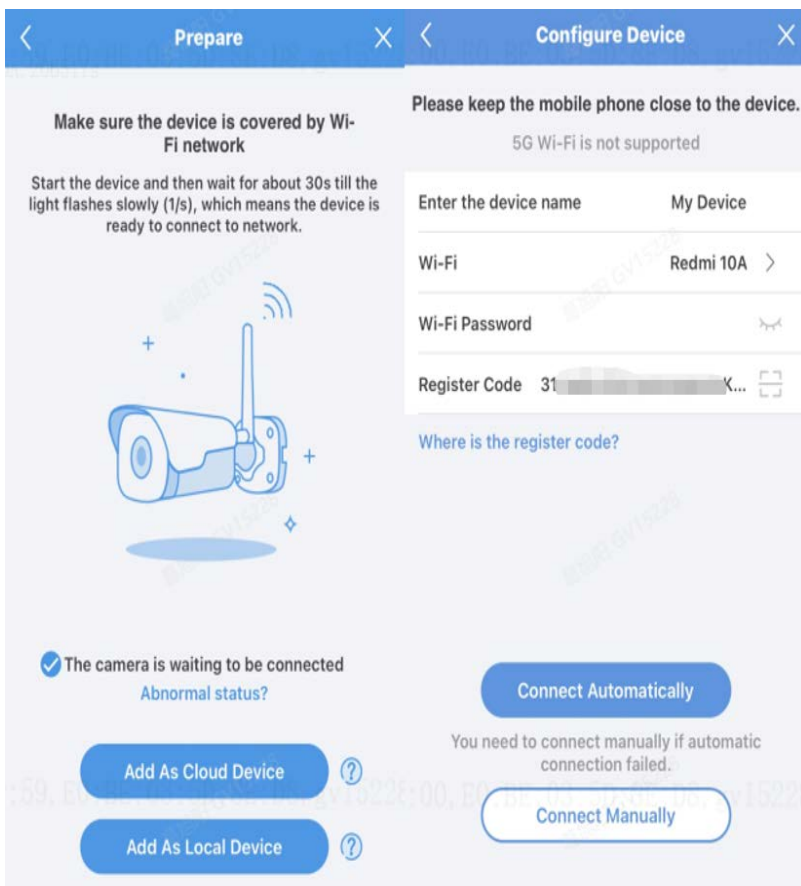
Here take a Uniview Wi-Fi camera for example:

Step 1 Power the Wi-Fi camera on and connect your phone to the router's Wi-Fi.

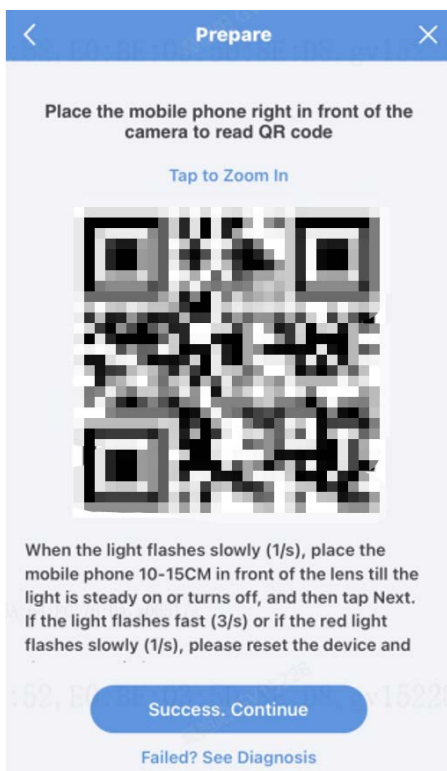
Step 2 Open the EZView app. Click **Add** under **Menu>Devices>Add>Add Wi-Fi device**. Input the Wi-Fi password and device's register code. Click **Connect Automatically**.

Note: Register code can be obtained by scanning the QR code on the camera's white label/quick guide. You may also get the register code from the quick guide and input it manually.

Title:	How to Add a Wi-Fi Camera to a Uniview Non-Wi-Fi NVR?	Version:	V1.1
Product:	NVR	Date	9/26/2023



Step 3 If the automatic connection fails, you may click **Connect Manually**, follow the instructions, and use the lens of the camera to read the QR code shown on the APP.



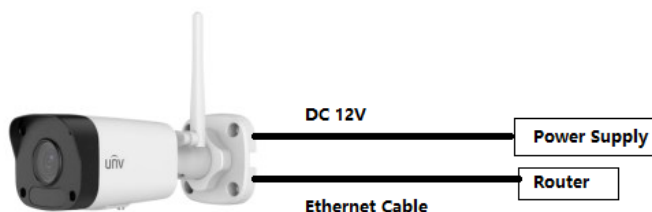
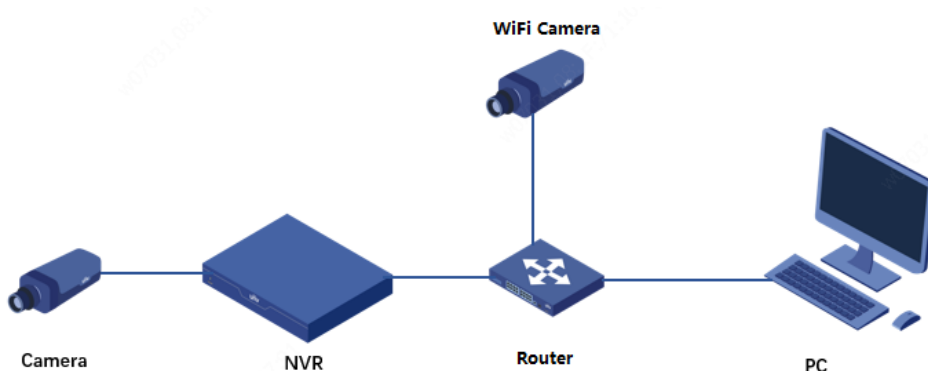
Step 4 If both methods fail, please press and hold the camera's reset button to reset the camera and start over.

Title:	How to Add a Wi-Fi Camera to a Uniview Non-Wi-Fi NVR?	Version:	V1.1
Product:	NVR	Date	9/26/2023

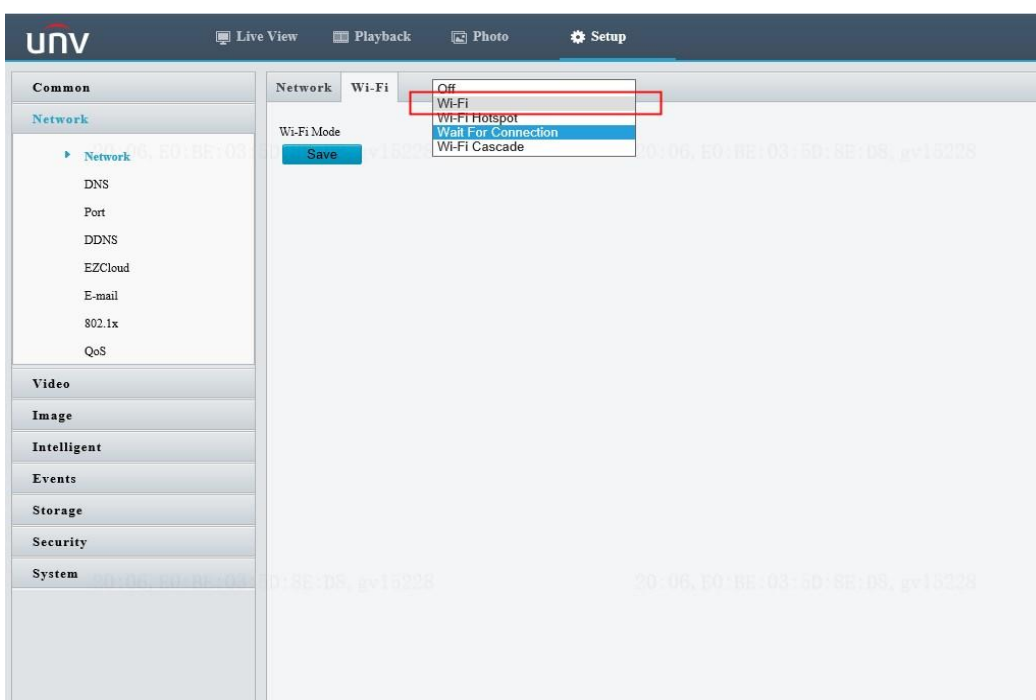
If you have a spare Ethernet cable, you can also connect the Wi-Fi camera to the router, power it on with an adapter, set it up manually from its web interface, and connect to the router wirelessly then.

Step 1 Connect the Wi-Fi camera to the Router with an Ethernet cable.

Blow is the typical topology you may refer to.



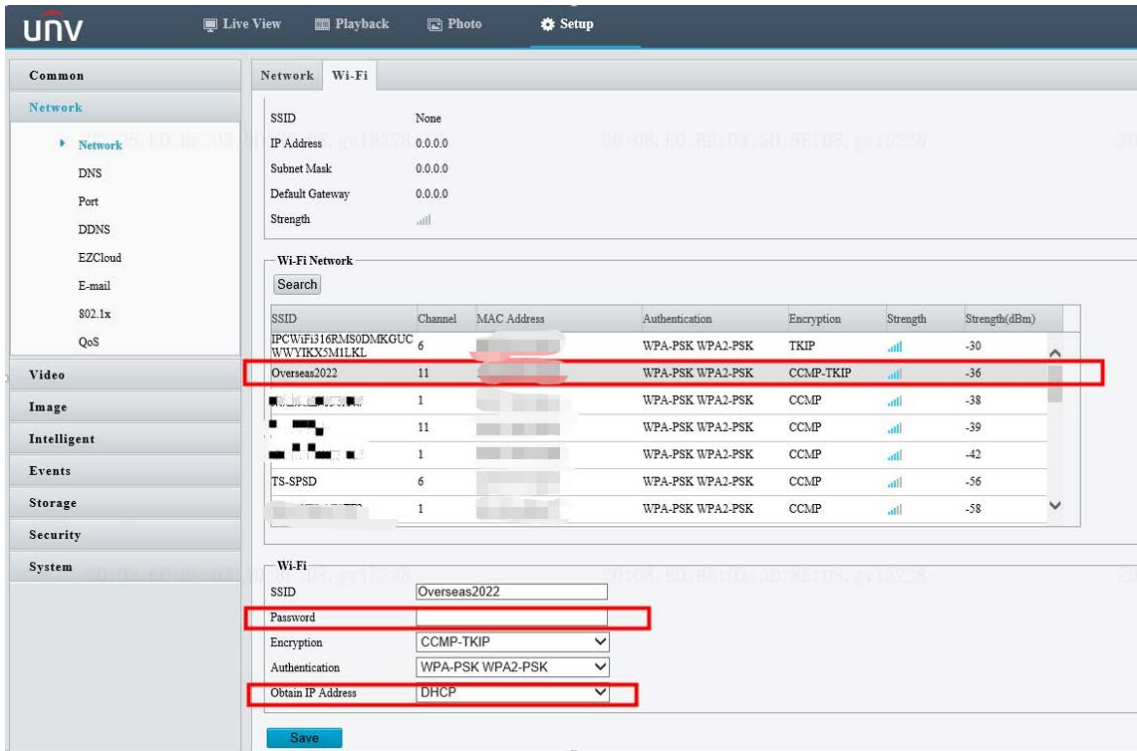
Step 2 Change **Wi-Fi Mode** to **Wi-Fi** under **Setup>Network>Network>Wi-Fi** from the camera's web interface



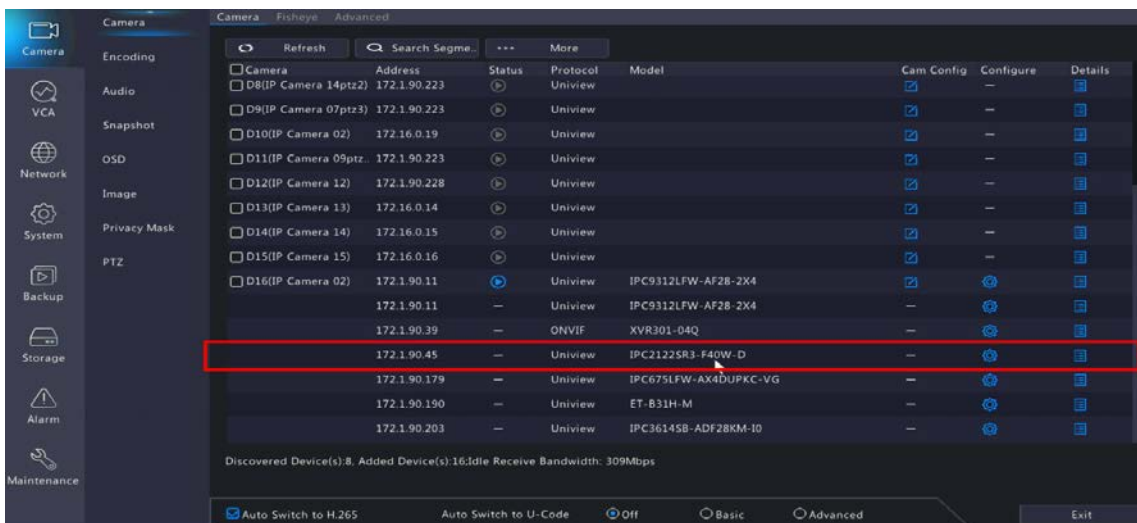
Step 3 Connect the Wi-Fi camera to your router's Wi-Fi, change **Obtain IP Address** to

Title:	How to Add a Wi-Fi Camera to a Uniview Non-Wi-Fi NVR?	Version:	V1.1
Product:	NVR	Date	9/26/2023

DHCP, and click **Save**.



Step 4 Disconnect the Ethernet cable from the Wi-Fi camera. The camera will be detected by the NVR on the bottom of the camera list on GUI or in the camera list if you click **auto search** on the NVR's web interface. You will be able to add the camera as a normal camera through its IP address then.



Title:	How to Add a Wi-Fi Camera to a Uniview Non-Wi-Fi NVR?	Version:	V1.1
Product:	NVR	Date	9/26/2023

No.	Camera ID	Address	Port	Remote Camera ID	Protocol	Status	Vendor	Model	Configure
1	D1 (IPC 01)	172.1.90.13	80	1	Uniview	ON	UNIVIEW	IPC672LR-AX4DUPKC	Access
2	D2 (teste...)	172.1.90.15	80	1	Uniview	ON	UNIVIEW	IPC3615LE-ADF28K-G	Access
3	D3 (Came...)	172.1.90.155	80	1	Uniview	ON	UNIVIEW		Access
4	D4 (Came...)	172.1.90.183	80	1	Uniview	ON	UNIVIEW	IPC675LFW-AX4DUPKC-VG	Access
5	D5 (test)	172.1.90.21	80	1	Uniview	ON	UNIVIEW	IPC36185B-ADF28KMC-I0	Access
6	D6 (IP Ca...)	172.16.0.20	80	1	Uniview	ON	UNIVIEW		Access
7	D7 (IP Ca...)	172.1.90.22	80	2	Uniview	ON	UNIVIEW	IPC9312LFW-AF28-2X4	Access
8	D8 (Came...)	172.1.90.80	80	1	Uniview	ON	UNIVIEW	IPC2K24SE-ADF40KMC-WL...	Access
9	D9 (IPC 01)	172.1.90.19	80	1	Uniview	ON	UNIVIEW	IPC86CEB-AF18KC-I0	Access
10	D10 (IP Ca...)	172.1.90.191	80	2	Uniview	ON	UNIVIEW		Access
11	D11 (IP Ca...)	172.1.90.24	88	1	Uniview	ON	UNIVIEW		Access
12	D12 (IP Ca...)	172.16.0.199	80	1	Uniview	ON	UNIVIEW		Access
13	D13 (IP Ca...)	172.16.0.12	80	1	Uniview	ON	UNIVIEW		Access
14	D14 (IP Ca...)	172.16.0.35	80	1	Uniview	ON	UNIVIEW		Access
15	D15 (IP Ca...)	172.1.90.239	80	2	Uniview	ON	UNIVIEW		Access
16	D16 (IP Ca...)	172.19.0.11	80	1	Uniview	ON	UNIVIEW		Access

Status	IP Address	Configure	Port	Qty	Protocol	Vendor	Model	Serial No.
ON	172.1.90.9	Access	80	6	ONVIF	UNIVIEW	XVR301-04Q3	
ON	172.1.90.11	Access	80	6	ONVIF	UNIVIEW	XVR301-04Q	
ON	172.1.90.14	Access	80	1	Uniview	UNIVIEW		
ON	172.1.90.19	Access	80	5	Uniview	UNIVIEW	IPC86CEB-AF18KC-I0	
ON	172.1.90.21	Access	80	1	Uniview	UNIVIEW	IPC36185B-ADF28KMC-I0	
ON	172.1.90.22	Access	80	2	Uniview	UNIVIEW	IPC9312LFW-AF28-2X4	
ON	172.1.90.108	Access	80	1	ONVIF	UNIVIEW	HC121@TC-08S-Z	
ON	172.1.90.193	Access	80	1	Uniview	UNIVIEW	ET-B31H-M	
ON	172.16.0.12	Access	80	1	Uniview	UNIVIEW	IPC2122SR3-PF40-C	
ON	172.16.0.19	Access	80	1	Uniview	UNIVIEW	IPC36155B-ADF28KMC-I0	
Added	172.1.90.13		80	1	Uniview	UNIVIEW	IPC672LR-AX4DUPKC	
Added	172.1.90.15		80	1	Uniview	UNIVIEW	IPC3615LE-ADF28K-G	

Found:14 Selected:0

OK Cancel